

job name:   
 type:

# 9" top.Is.tiki™ spec sheet 90CRI

**material**

**housing**

precision CNC spun .063" aluminum. tapered drum with rolled bottom edge for added strength.

**array platform**

.080" spun aluminum.

**bottom lens** (optional)

.125" P95 frosted acrylic flat lens with 3 finger holes.

**optics**

.050" spun aluminum conical reflector finished in high reflectance (>92%) matte white powder coat.

**LED module**

COB array in 2700K, 3000K, 3500K, or 4000K. (call factory for 5000K) (90+ cri standard). under normal operating conditions, the LEDs employed are rated for >50,000hrs L70 (6.8K) per IES TM-21 from LM-80 test data.

**driver**

integral, class 2, universal input (120-277v), constant current, 0-10v dimming, 1% minimum dimming level, PF >.9, THD <20%, protections include open and short circuit, overload and over temperature.

**mounting**

5"dia. spun steel canopy in satin white with 6 ft stainless steel cable tripod and field adjustable grippers that allow for exact AFF mounting heights. or select 12ft adjustable suspension. (drawing below)

**premium mountings**

**colored cloth cord** (optional)

spun aluminum canopy painted to match fixture. ultrathin vertical stainless steel cable and field adjustable gripper that allow for exact AFF mounting heights. cloth-covered power cord color options listed below. cord requires special stripping tool (link).

**power over cable** (optional)

spun aluminum canopy painted to match fixture. Class 2 LED powered suspension system that suspends and powers the fixture with thin stainless steel copper-core conductive cables, providing a clean look without the need for a separate power cord. powered suspension requires cable cutter (link) specifically designed to cut stainless steel aircraft cable from 1/32" to 1/8".

**finish**

select from standard powder coat paint finishes or specify RAL# for custom colors.

**emergency**

recommend use of inverter (by other).

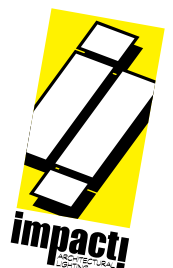
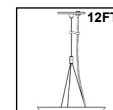
optional WREM: wired for remote EM battery (by other). if using WHPC, SBPC, or BKPC cords, 2nd power cord required.



## catalog number

P4909					
-------	--	--	--	--	--

size	CCT	lumens	painting finish	power cord	options
<b>P4909</b> 9"dia X 8.5"ht  see pages 2 & 3 for info on P4913 and P4917	<b>27</b> 2700K  <b>30</b> 3000K  <b>35</b> 3500K  <b>40</b> 4000K	<b>LO</b> 995 lm  <b>HI</b> 1985 lm  <b>HX</b> 2780 lm	<b>AP</b> anodized paint <b>BS</b> brass <b>BU</b> blue <b>BZ</b> bronze <b>CP</b> champagne <b>FB</b> flat black <b>GM</b> gun metal <b>MB</b> military blue <b>MW</b> matte white <b>OR</b> orange <b>RD</b> red <b>SB</b> satin black <b>SS</b> satin silver <b>TG</b> textured gray <b>YO</b> yellow	<b>WHPC</b> white power cord and canopy <b>BKPC</b> black power cord and canopy <b>SBPC</b> silver braid power cord and white canopy  <b>premium</b> (driver canopy required) (not available w/ 12ft option) <b>BUPC</b> blue cloth cord <b>ORPC</b> orange cloth cord <b>PLPC</b> purple cloth cord <b>RDPC</b> red cloth cord <b>WGPC</b> white & gray dot cloth cord <b>POC</b> power over cable	<b>6FT</b> 72" cables <b>12FT</b> 12ft adj suspension <sup>†</sup> <small>†not available with premium power cords</small> <b>BL</b> Bottom lens <b>WREM</b> wired for remote EM battery pack (by other) (see note above) <b>ELD</b> EldoLED* <b>LUT</b> Lutron* <small>*consult factory</small>
			<b>premium finish</b> RAL specify RAL#		



job name:   
 type:

# 13" top.ls.tiki™ spec sheet 90CRI

**material**

**housing**

precision CNC spun .063" aluminum. tapered drum with rolled bottom edge for added strength.

**array platform**

.080" spun aluminum.

**bottom lens** (optional)

.125" P95 frosted acrylic flat lens with 3 finger holes.

**optics**

.050" spun aluminum conical reflector finished in high reflectance (>92%) matte white powder coat.

**LED module**

COB array in 2700K, 3000K, 3500K, or 4000K. (call factory for 5000K) (90+ cri standard). under normal operating conditions, the LEDs employed are rated for >50,000hrs L70 (6.8K) per IES TM-21 from LM-80 test data.

**driver**

integral, programmable, class 2, universal input (120-277v), constant current, 0-10v dimming, 1% minimum dimming level, PF >.9, THD <20%, protections include open and short circuit, overload and over temperature.

**mounting**

5"dia. spun steel canopy in satin white with 6ft stainless steel cable tripod and field adjustable grippers that allow for exact AFF mounting heights. or select 12ft adjustable suspension. (drawing below)

**premium mountings**

**colored cloth cord** (optional)

spun aluminum canopy painted to match fixture. ultrathin vertical stainless steel cable and field adjustable gripper that allow for exact AFF mounting heights. cloth-covered power cord color options listed below. cord requires special stripping tool (link).

**power over cable** (optional)

spun aluminum canopy painted to match fixture. Class 2 LED powered suspension system that suspends and powers the fixture with thin stainless steel copper-core conductive cables, providing a clean look without the need for a separate power cord. powered suspension requires cable cutter (link) specifically designed to cut stainless steel aircraft cable from 1/32" to 1/8".

**finish**

select from standard powder coat paint finishes or specify RAL# for custom colors.

**emergency**

recommend use of inverter (by other).

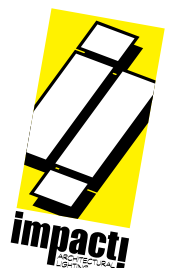
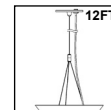
optional WREM: wired for remote EM battery (by other). if using WHPC, SBPC, or BKPC cords, 2nd power cord required.



## catalog number

P4913					
-------	--	--	--	--	--

size	CCT	lumens	painting finish	power cord	options
<b>P4913</b> 13"dia X 12"ht  see page 3 for info on P4917	<b>27</b> 2700K  <b>30</b> 3000K  <b>35</b> 3500K  <b>40</b> 4000K	<b>FX</b> 1585 lm  <b>LO</b> 2975 lm  <b>HI</b> 3375 lm  <b>HX</b> 4120 lm  <b>CL*</b> xxxx lm custom lumens consult factory	<b>AP</b> anodized paint <b>BS</b> brass <b>BU</b> blue <b>BZ</b> bronze <b>CP</b> champagne <b>FB</b> flat black <b>GM</b> gun metal <b>MB</b> military blue <b>MW</b> matte white <b>OR</b> orange <b>RD</b> red <b>SB</b> satin black <b>SS</b> satin silver <b>TG</b> textured gray <b>YO</b> yellow	<b>WHPC</b> white power cord and canopy  <b>BKPC</b> black power cord and canopy  <b>SBPC</b> silver braid power cord and white canopy  <b>premium</b> (driver canopy required) (not available w/ 12ft option) <b>BUPC</b> blue cloth cord <b>ORPC</b> orange cloth cord <b>PLPC</b> purple cloth cord <b>RDPC</b> red cloth cord <b>WGPC</b> white & gray dot cloth cord <b>POC</b> power over cable	<b>6FT</b> 72" cables  <b>12FT</b> 12ft adj suspension <sup>†</sup> <small>†not available with premium power cords</small>  <b>BL</b> Bottom lens  <b>WREM</b> wired for remote EM battery pack (by other) (see note above)  <b>ELD</b> EldoLED*  <b>LUT</b> Lutron* <small>*consult factory</small>
			<b>premium finish</b> RAL specify RAL#		



job name:   
 type:

# 17" top.is.tiki™ spec sheet 90CRI

**material**

**housing**

precision CNC spun .063" aluminum. tapered drum with rolled bottom edge for added strength.

**array platform**

.080" spun aluminum.

**bottom lens** (optional)

.125" P95 frosted acrylic flat lens with 3 finger holes.

**optics**

.050" spun aluminum conical reflector finished in high reflectance (>92%) matte white powder coat.

**LED module**

COB array in 2700K, 3000K, 3500K, or 4000K. (call factory for 5000K) (90+ cri standard). under normal operating conditions, the LEDs employed are rated for >50,000hrs L70 (6.8K) per IES TM-21 from LM-80 test data.

**driver**

integral, class 2, universal input (120-277v), constant current, 0-10v dimming, 1% minimum dimming level, PF >.9, THD <20%, protections include open and short circuit, overload and over temperature.

**mounting**

5"dia. spun steel canopy in satin white with 6ft stainless steel cable tripod and field adjustable grippers that allow for exact AFF mounting heights. or select 12ft adjustable suspension. (drawing below)

**premium mountings**

**colored cloth cord** (optional)

spun aluminum canopy painted to match fixture. ultrathin vertical stainless steel cable and field adjustable gripper that allow for exact AFF mounting heights. cloth-covered power cord color options listed below. cord requires special stripping tool (link).

**power over cable** (optional)

spun aluminum canopy painted to match fixture. Class 2 LED powered suspension system that suspends and powers the fixture with thin stainless steel copper-core conductive cables, providing a clean look without the need for a separate power cord. powered suspension requires cable cutter (link) specifically designed to cut stainless steel aircraft cable from 1/32" to 1/8".

**finish**

select from standard powder coat paint finishes or specify RAL# for custom colors.

**emergency**

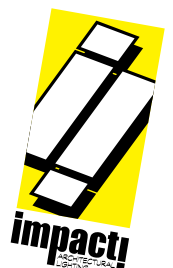
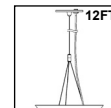
recommend use of inverter (by other).

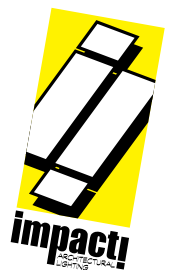
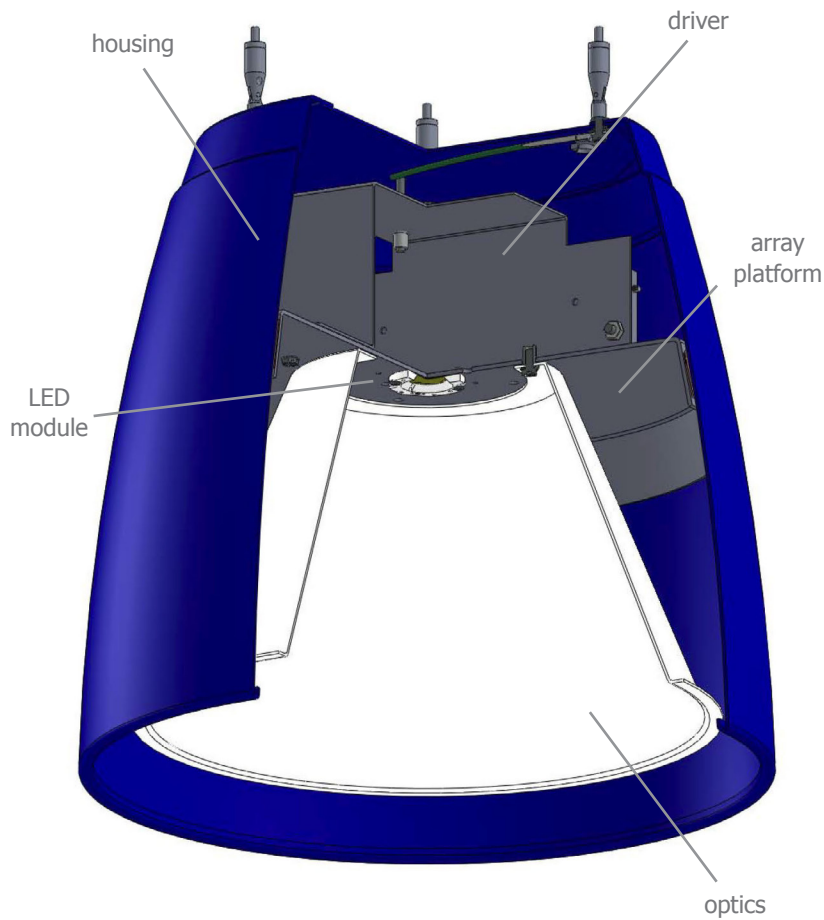
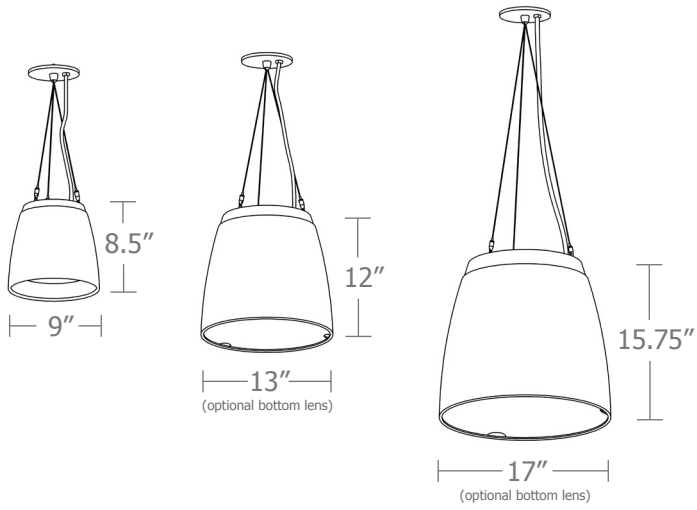
optional WREM: wired for remote EM battery (by other). if using WHPC, SBPC, or BKPC cords, 2nd power cord required.



## catalog number

P4917					
size	CCT	lumens	painted finish	power cord	options
<b>P4917</b> 17"dia X 15.75"ht	<b>27</b> 2700K	<b>FX</b> 2580 lm	<b>AP</b> anodized paint	<b>WHPC</b> white power cord and canopy	<b>6FT</b> 72" cables
	<b>30</b> 3000K	<b>LO</b> 3375 lm	<b>BS</b> brass	<b>BKPC</b> black power cord and canopy	<b>12FT</b> 12ft adj suspension <sup>†</sup>
	<b>35</b> 3500K	<b>HI</b> 4550 lm	<b>BU</b> blue	<b>SBPC</b> silver braid power cord and white canopy	<sup>†</sup> not available with premium power cords
	<b>40</b> 4000K	<b>HX</b> 4985 lm	<b>BZ</b> bronze	<b>premium</b> (driver canopy required) (not available w/ 12ft option)	<b>BL</b> Bottom lens
		<b>CL*</b> xxxx lm custom lumens consult factory	<b>CP</b> champagne	<b>BUPC</b> blue cloth cord	<b>WREM</b> wired for remote EM battery pack (by other) (see note above)
			<b>FB</b> flat black	<b>ORPC</b> orange cloth cord	<b>ELD</b> EldoLED*
			<b>GM</b> gun metal	<b>PLPC</b> purple cloth cord	<b>LUT</b> Lutron* *consult factory
			<b>MB</b> military blue	<b>RDPC</b> red cloth cord	
			<b>MW</b> matte white	<b>WGPC</b> white & gray dot cloth cord	
			<b>OR</b> orange	<b>POC</b> power over cable	
			<b>RD</b> red		
			<b>SB</b> satin black		
			<b>SS</b> satin silver		
			<b>TG</b> textured gray		
			<b>YO</b> yellow		
			<b>premium finish</b>		
			<b>RAL</b> specify RAL#		

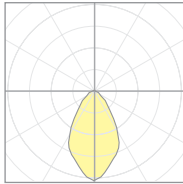




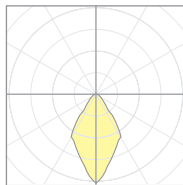
# Calculation Table

The application of a Light Loss Factor is required to:

- match the lumen output for the power module specified
- incorporate the increased lumen output due to LED/Driver upgrades



20617.1  
P4913-40CL (3700lm)



20688  
P5117-40CL (4000lm) NUL

Cat No	Delivered* Lumens	Watts 120V / 277V	IES File #	LLF to be applied
P4909 LO	995	10	20616.1 open	.26
			20617.1 lensed	.24
P4909 HI	1985	21	20616.1 open	.52
			20617.1 lensed	.48
P4909 HX	2780	29	20616.1 open	.72
			20617.1 lensed	.67
P4913 FX	1585	16	20616.1 open	.41
			20617.1 lensed	.38
P4913 LO	2975	31	20616.1 open	.78
			20617.1 lensed	.72
P4913 HI	3375	35	20616.1 open	.88
			20617.1 lensed	.82
P4913 HX	4120	42	20616.1 open	1.07
			20617.1 lensed	1.00
P4917 FX	2580	27	20688 open	.62
			20617.1 lensed	.55
P4917 LO	3375	35	20688 open	.81
			20617.1 lensed	.73
P4917 HI	4550	47	20688 open	1.09
			20617.1 lensed	.98
P4917 HX	4985	51	20688 open	1.19
			20617.1 lensed	1.07

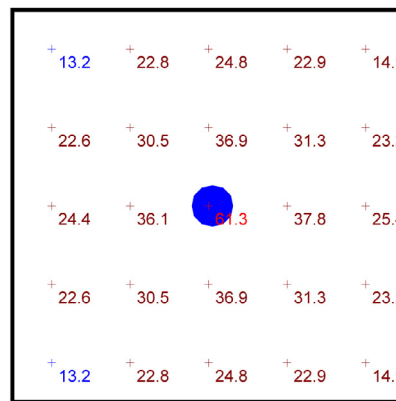
\*delivered lumens based on 4000K, 90+ cri

## Typical Lighting Layout

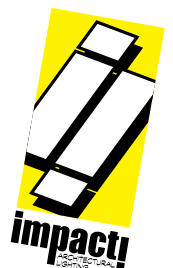
Schedule					
Symbol	QTY	Catalog Number	Description	Lamp	Wattage
	1	P4913 40 HI	13" dia. pendant top.is.tiki luminaire w/ open bottom	4000k 90cri LED	35

Statistics						
Description	Symbol	Avg	Max	Min	Max/Min	Avg/Min
top.is.tiki	+	26.8 fc	61.3 fc	13.2 fc	4.6:1	2.0:1

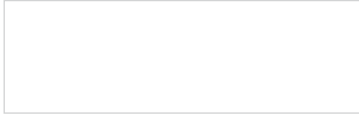
- 10' x 10' x 12'H space
- 80/50/20 reflectances
- bottom of fixture at 10' aff
- FC readings at 2.5' aff
- layout conducted using 13" dia. unit with HI lumen package (3260 delivered lumens)



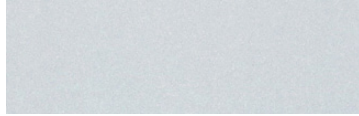
Plan View  
Scale - 1" = 2ft



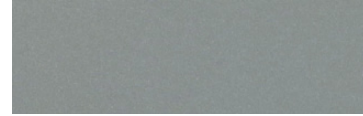
## Powder Coat Paint Finishes



**MW** matte white



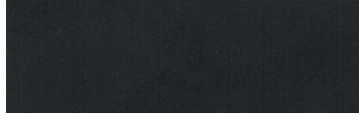
**AP** anodized paint



**SS** satin silver



**TG** textured gray



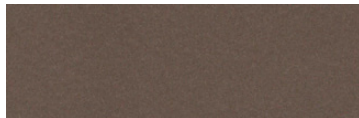
**FB** flat black



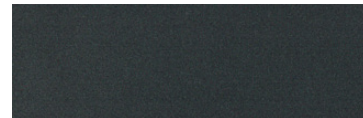
**SB** satin black



**CP** champagne



**BZ** bronze



**GM** gun metal



**OR** orange 2011



**BU** blue 5017



**BS** brass



**RD** red 3020



**YO** yellow 1018



**MB** military blue

For accurate color verification, actual finish samples are available upon request.

## Premium Finishes\*



**RAL#**

\*Available on select series. Consult product submittal for availability.

